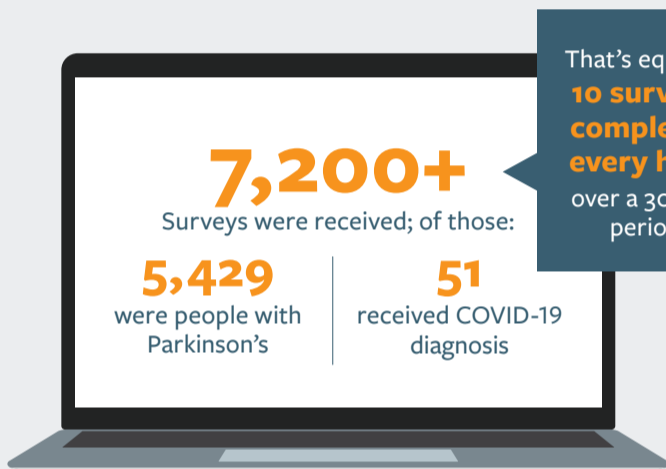


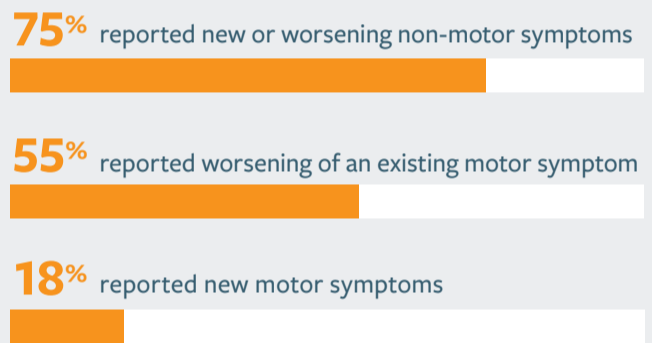
Fox Insight
SURVEY RESULTS
CAPTURE IMPACT *of*
COVID-19 *on* **PARKINSON'S**

Over a four-week period, leading Parkinson's researchers deployed a first-of-its-kind study through Fox Insight, The Michael J. Fox Foundation's online clinical study, to identify the effects of the global pandemic on Parkinson's symptoms and disruptions in care. These findings will help clinicians assess and meet patient needs and allow the Foundation to advocate for public policies that provide improved access to care for the Parkinson's community.



That's equal to **10 surveys completed every hour** over a 30-day period

OF THOSE WITH COVID-19:



OF THOSE WITH PARKINSON'S WITHOUT COVID-19:



52% reported worsened non-motor symptoms
43% reported worsened motor symptoms
35% reported that at least one essential daily activity was disrupted



Interruptions to exercise and daily social activities were associated with worsening of Parkinson's symptoms even in those without COVID-19, indicating the toll that living through the pandemic has taken on people with Parkinson's.

Barriers to Care



62% of respondents with Parkinson's without COVID-19 had issues accessing health care



39% of respondents with Parkinson's used telemedicine



Lower income participants and people of color experienced more obstacles obtaining Parkinson's medications and attended fewer telemedicine appointments.



The Fox Insight COVID-19 survey is still open. Share your experience at foxinsight.org